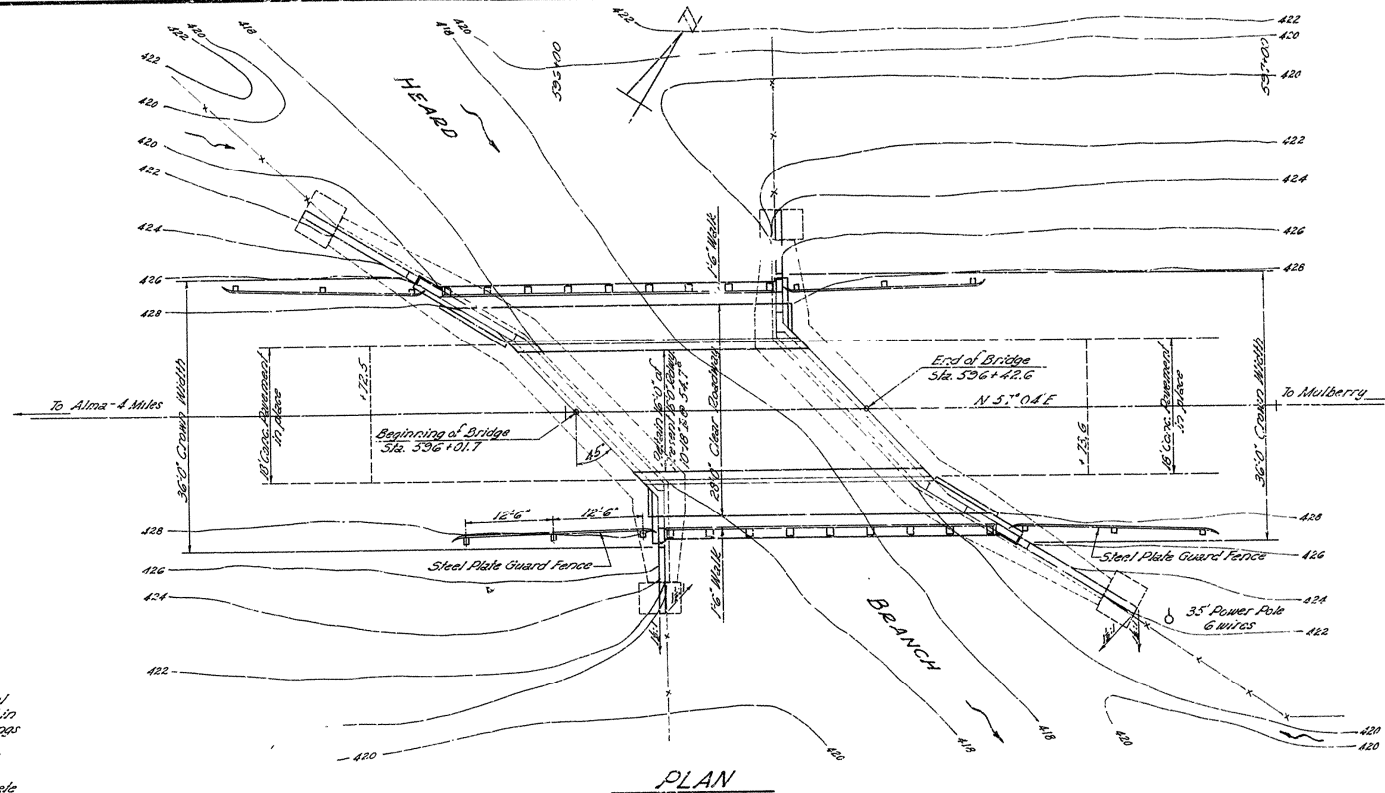


Right of Way Data			
Sta. to	Sta.	21' of 1/2	Total Width
595	597	50'	100

FIG. NO.	STATE	PROJECT NO.	TOTAL SHEETS	SHEET NO.
0	ARK.			
STATE JOB NO. 4275 1957 5 21				



### GENERAL NOTES

Dimensions relative to present structure are general only. Detailed dimensions are to be secured and verified in field before construction is begun and before shop drawings for reinforcing and structural steel are made.

All concrete to be poured in the dry. All exposed corners to be chamfered, unless otherwise noted.

Rock excavation shall be made in neat lines of concrete footings. Care shall be taken to avoid shattering of rock faces by excessive blasting.

In general all construction joints in new work of abutments shall be horizontal and shall be provided with keys not less than 6" deep and covering the middle third of butt dimensions.

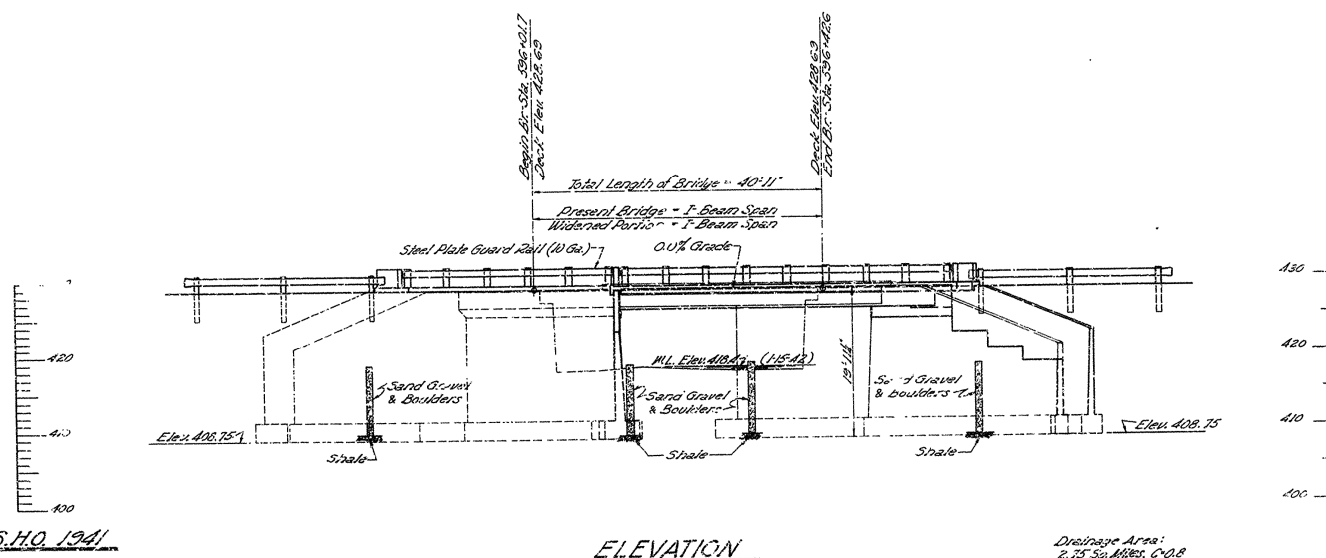
Reinforcing steel to be delivered bent to shape of structural or intrinsic steel grade. Shop list and bending diagrams must be submitted and approved before fabrication is begun.

For details of Abutments No. 1 & 2 of Bridge No. 2282, see Drawing No. 7939-B.

For details of Superstructure of Bridge No. 2282, see Drawing No. 7939-C.

Specifications: Arkansas State Highway Commission Standard Specifications for Road and Bridge Construction, adopted March 1, 1940.

ITEM No.	ITEM	QUANTITY	UNIT
105	Dry Excavation for Structures	65	Cu Yd.
103	Wet Excavation for Structures	76	Cu Yd.
103	Solid Rock Excavation for Structures	4	Cu Yd.
S.P.R.002	Class A Concrete for Bridges	37.4	Cu Yd.
S.P.R.002	Class S Concrete for Bridges	19.1	Cu Yd.
803	Reinforcing Steel	5840	Lb.
805-3	Steel Plate Guard Rail (10 Gage)	107.7	Lb. Ft.
S.P.R.007	Structural Steel in Beam Spans	13,150	Lb.
S.P.	Remodeling Existing Bridges and Maintaining Traffic	100%	Item



DESIGN LIVE LOAD H-20 LOADING A.A.S.H.O. 1941

UNIT STRESS - S:

Class A Concrete	700' / "
Class S Concrete (7-10)	1,000' / "
Reinforcing Steel	18,000' / "
Structural Steel	16,000' / "

Drainage Area:  
2.75 Sq. Miles, C.O.B.

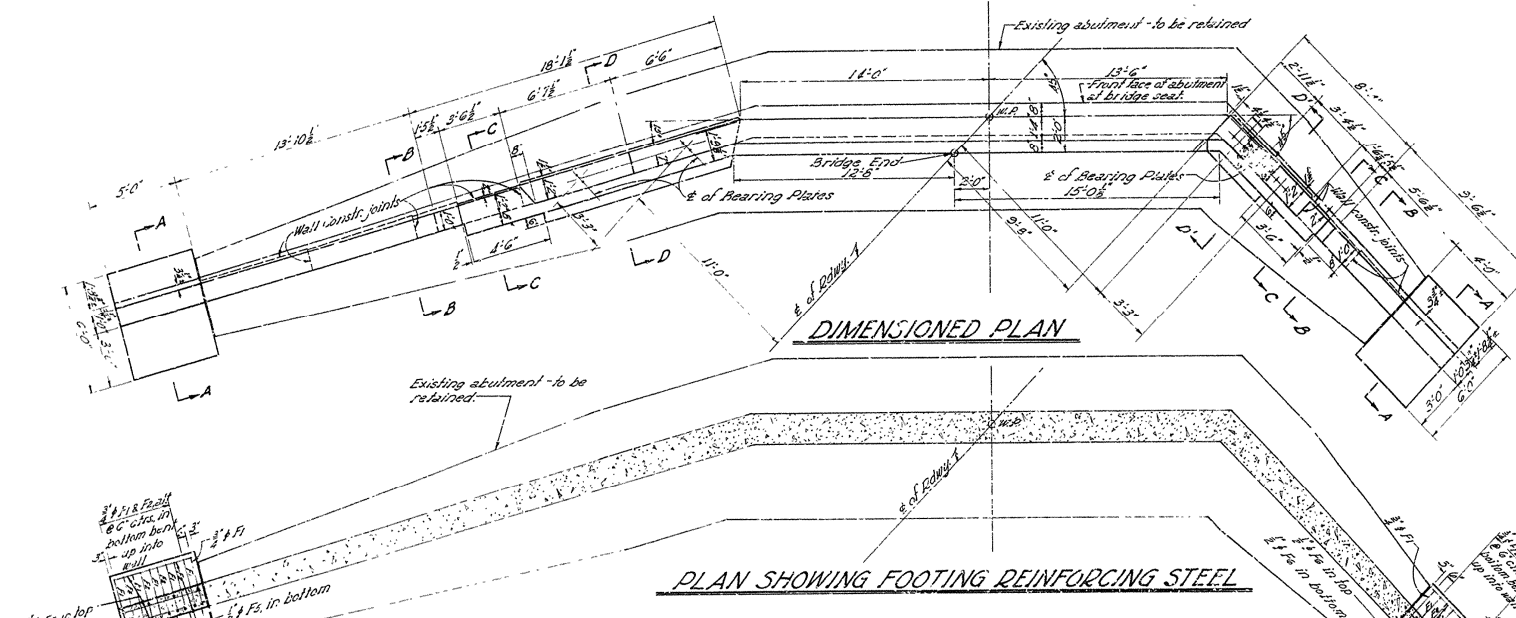
B.M. Elev. 424.45  
Nail 1/2" Power Pole  
30' 1/2" Sta. 596+125

LAYOUT OF BRIDGE  
OVER HEARD BRANCH  
ALMA-MULBERRY ROAD  
CRENSHAW COUNTY  
ROUTE 64 SEC. 2

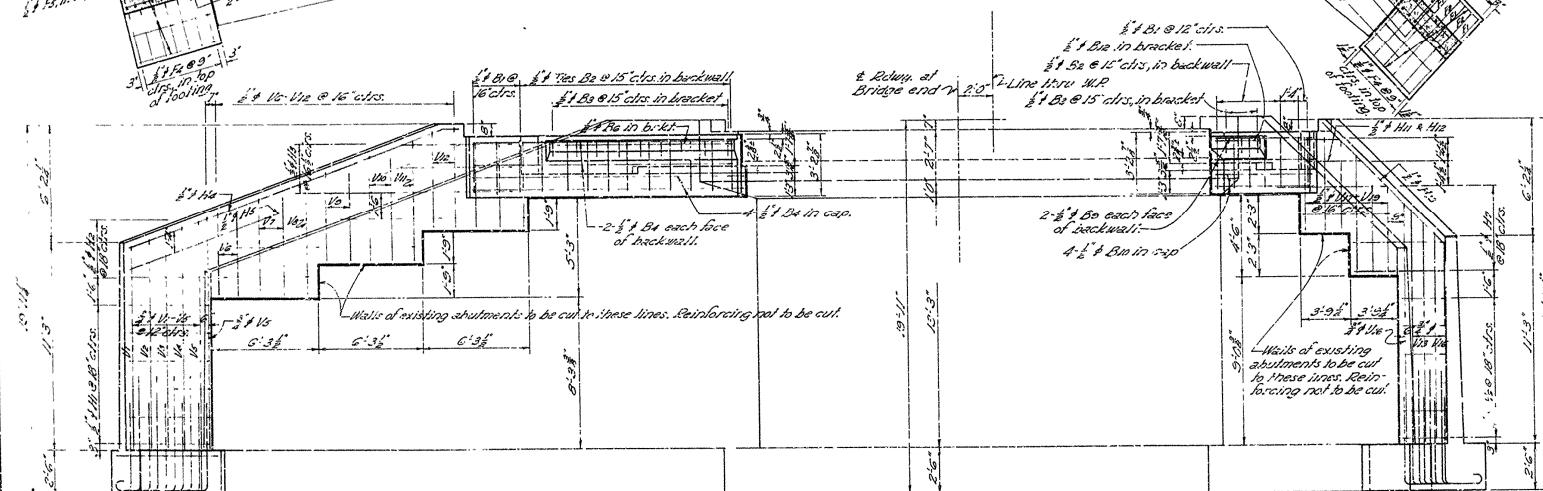
ARKANSAS STATE HIGHWAY COMMISSION  
LITTLE ROCK, ARK.

Drawn By: A.L.L. Date: 5-10-57  
Traced By: A.L.L. Date: 5-23-57  
Checked By: L.T.E. Date: 5-15-57

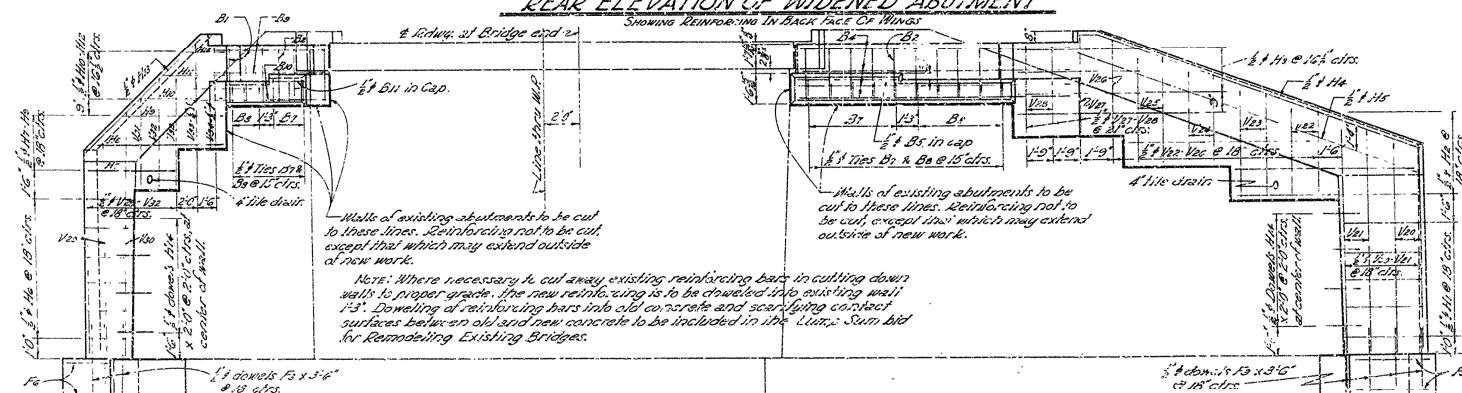
BRIDGE NO. 2282 DRAWING NO. 7939A



PLAN SHOWING FOOTING REINFORCING STEEL



REAR ELEVATION OF WIDENED ABUTMENT

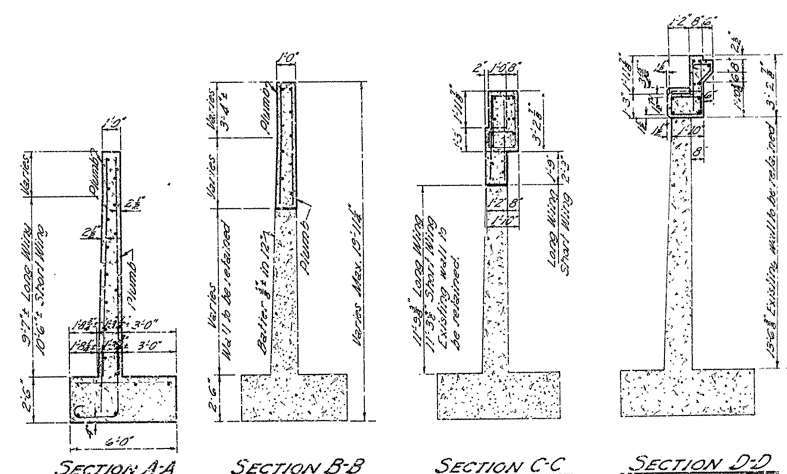


FRONT ELEVATION OF WIDENED ABUTMENT

REINFORCING BAR SCHEDULE-EACH ABUTMENT

BENT BARS					STRAIGHT BARS											
MARK	NO.	SIZE	LENGTH	BENDING DIAGRAM	MARK	NO.	SIZE	LENGTH	MARK	NO.	SIZE	LENGTH	MARK	NO.	SIZE	LENGTH
F <sub>1</sub>	11	3/4"	7'-10"		F <sub>3</sub>	7	1/2"	5'-6"	B <sub>5</sub>	1	3/4"	6'-0"	V <sub>10</sub>	2	3/4"	13'-2"
F <sub>2</sub>	7	3/4"	3'-2"		F <sub>4</sub>	13	1/2"	5'-7"	B <sub>6</sub>	1	3/4"	10'-0"	V <sub>17</sub>	2	3/4"	4'-1"
H <sub>4</sub>	2	3/4"	20'-3"		F <sub>5</sub>	6	1/2"	4'-7"					V <sub>18</sub>	1	3/4"	6'-8"
B <sub>1</sub>	5	3/4"	10'-7"		H <sub>1</sub>	11	3/4"	4'-8"					V <sub>19</sub>	3	3/4"	5'-3"
B <sub>2</sub>	15	3/4"	7'-0"		H <sub>2</sub>	7	1/2"	11'-0"	B <sub>10</sub>	4	3/4"	7'-4"	V <sub>21</sub>	2	3/4"	12'-0"
B <sub>3</sub>	12	1/2"	2'-8"		H <sub>3</sub>	6	3/4"	6'-6"	B <sub>11</sub>	1	3/4"	2'-7"	V <sub>22-V25</sub>	6	3/4"	5'-3 3/4"
B <sub>7</sub>	8	3/4"	6'-3"		H <sub>5</sub>	2	3/4"	2'-0"	B <sub>12</sub>	1	3/4"	3'-4"	V <sub>26</sub>	1	3/4"	5'-2"
B <sub>8</sub>	8	3/4"	5'-7"		H <sub>6</sub>	12	3/4"	3'-8"	V <sub>1-V4</sub>	4	3/4"	11'-7 3/4"	V <sub>27</sub>	1	3/4"	5'-3"
B <sub>9</sub>	4	3/4"	7'-3"		H <sub>7</sub>	5	1/2"	7'-5"	V <sub>5</sub>	2	3/4"	12'-4"	V <sub>28</sub>	2	3/4"	4'-6"
					H <sub>8</sub>	1	3/4"	10'-6"	V <sub>6</sub>	2	3/4"	4'-4"	V <sub>29</sub>	2	3/4"	12'-5"
					H <sub>9</sub>	1	3/4"	8'-6"	V <sub>7</sub>	2	3/4"	5'-1"	V <sub>30</sub>	1	3/4"	13'-0"
					H <sub>10</sub>	1	3/4"	7'-3"	V <sub>8</sub>	1	3/4"	6'-1"	H <sub>31</sub>	1	3/4"	5'-6"
					H <sub>11</sub>	2	3/4"	5'-3"	V <sub>9</sub>	2	3/4"	4'-3"	V <sub>32</sub>	2	3/4"	6'-0"
					H <sub>12</sub>	2	3/4"	2'-10"	V <sub>10</sub>	2	3/4"	5'-7"	V <sub>33</sub>	1	3/4"	5'-1"
					H <sub>13</sub>	2	3/4"	11'-0"	V <sub>11</sub>	1	3/4"	6'-5"	V <sub>34</sub>	1	3/4"	5'-2"
					H <sub>14</sub>	8	3/4"	2'-0"	V <sub>12</sub>	2	3/4"	5'-2"				
					B <sub>4</sub>	8	3/4"	15'-4"	V <sub>35-V38</sub>	3	3/4"	11'-9 3/4"				

NOTE: Dimensions relating to reinforcing steel are to centers of bars.



SECTION A-A

### SECTION B-5

SECTION C-C

SECTION D-1

NOTE:- SECTION D-D' same  
as above - reversed.

GENERAL NOTE:

GENERAL NOTES:  
All concrete to be Class A. All exposed corners to be chamfered 1" unless otherwise noted.  
Dimensions relative to present structure are given only. Detailed dimensions are to be secured and verified in the field before construction is begun, and before shop drawings for reinforcing and structural steel are made.  
For details of superstructure, see Drawg. No. 7939c.  
Payment for drains to be included in the price bid for Class A Concrete.

DETAILS OF  
WIDENING OF ABUTMENTS NO. 1 & 2  
OVER HEARD BRANCH  
ALMA-MULBERRY ROAD  
CEANFORD COUNTY

ARKANSAS STATE HIGHWAY COMMISSION  
LITTLE ROCK, ARK.

Drawn By: M.B. Date: 5/1/51  
Traced By: A.L. Date: 5/2/51  
Checked By: L.H.R. Date: 5/1/51  
Scale: 1/4" = 1' 0"  
BRIDGE NO. 2282 DRAWING NO. 7939

